





This stunning Edwardian home, built in 1910, blends timeless charm with modern luxury in Hampshire's countryside. In 0.8 of an acre and offering over 3,700 sq ft of elegant living spaces, this beautiful five bedroom home, has landscaped grounds & a garden room. With glorious walks and a pub nearby, it's a rare find.

- Stunning Countryside Location
With Views In 0.8 Acres
- Principle Suite With Full
Bathroom Suite
- Guest Suite With Shower Room
- Three Further Bedrooms &
Bathroom
- Living Room & Dining Room With
Bellfire
- Open Plan Kitchen With AGA
Range Cooker
- Second Kitchen/ Utility Room /
Cloak Room
- Masters Office /Study With Log
Burner
- Ample Parking & Oak Frame Car
Port
- Garden Room / Millboard Deck
Area

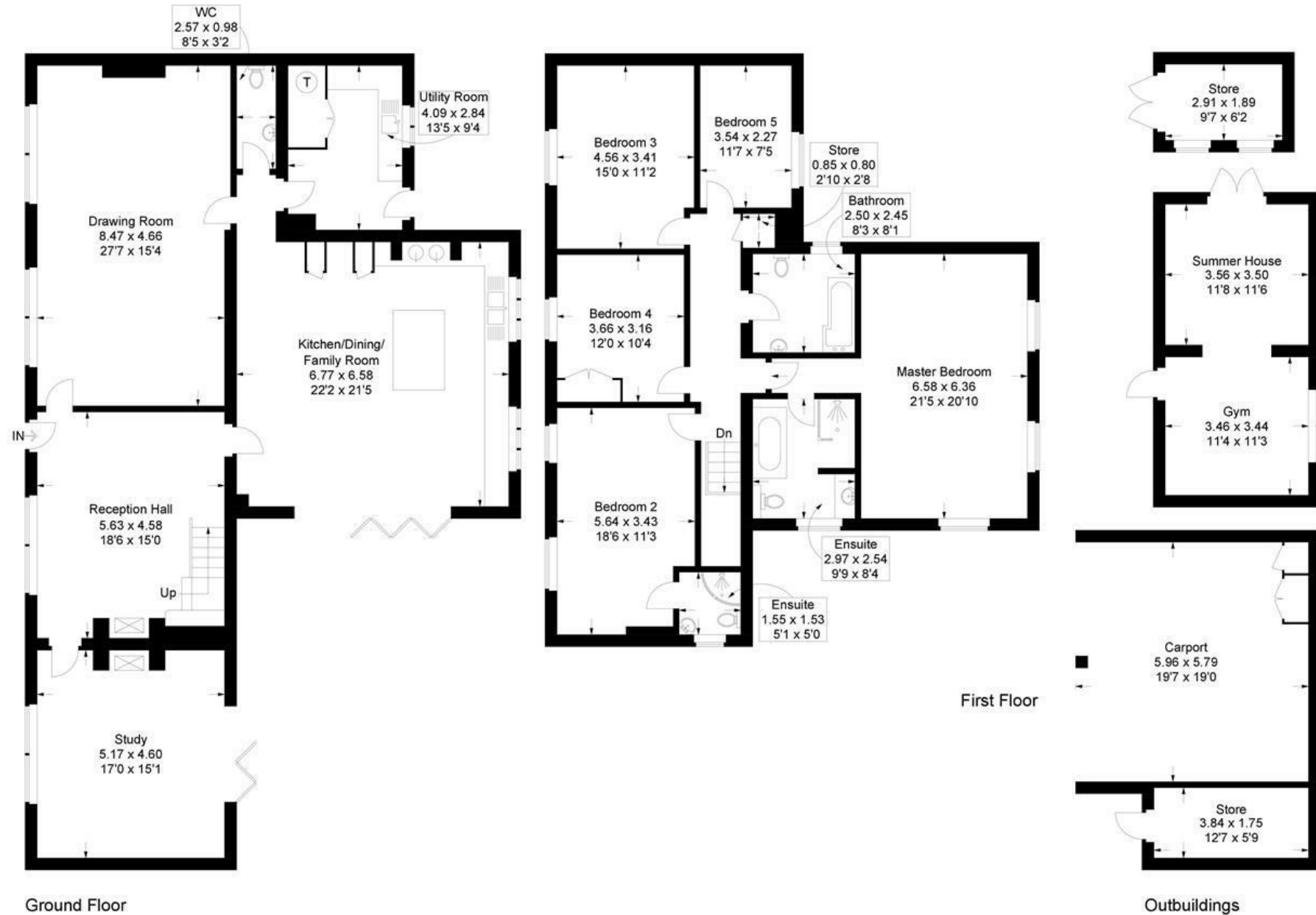


Broadacre House, Waterlooville

Approximate Gross Internal Area = 276.6 sq m / 2977 sq ft

Outbuildings = 74 sq m / 796 sq ft

Total = 350.6 sq m / 3773 sq ft



This plan is for layout guidance only. Not drawn to scale unless stated. Windows and door openings are approximate. Whilst every care is taken in the preparation of this plan, please check all dimensions, shapes and compass bearings before making any decisions reliant upon them.